

GENERAL WT

URBAN WASTE TRANSPORT



**NEW HEAVY ALL-POSITION URBAN
WASTE TRANSPORT TIRE**

**AN ALL-POSITION TIRE THAT
DELIVERS RELIABLE TRACTION
AND MILEAGE WITH A COMPOUND
RESISTANT TO CUTS AND TEARS.**

**BUILT ON
PROVEN
PERFORMANCE**



GENERAL TIRE

WWW.GENERALTIRETRUCK.COM

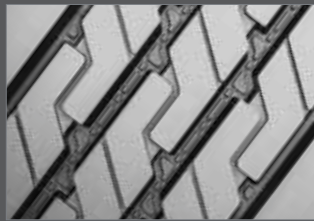
GENERAL WT

URBAN WASTE TRANSPORT



ADVANCED TREAD COMPOUND

Advanced tread compound balances cut and tear resistance with optimized mileage specifically for the waste transport industry.



DURABLE AND EXTENDED PRODUCT LIFE

Bead construction engineered to withstand high brake temperatures, providing structural durability and extended product life.



REINFORCED, TOUGH, DAMAGE-REDUCING SIDEWALL

Raised sidewall rib to protect casing against curbing and abrasion damages.



INNOVATIVE GROOVE TECHNOLOGY

Innovative groove technology leads to minimum stone retention, extending casing life.

APPLICATIONS: Waste transportation and other high scrub, urban applications

TIRE SIZE	LOAD RANGE	ARTICLE NUMBER	TREAD DEPTH (32nds)	MAX. SPEED MPH #	STATIC LOADED RADIUS IN (mm)	OVERALL INFLATED DIAMETER IN (mm)	OVERALL INFLATED WIDTH IN (mm)	LOADED SECTION WIDTH IN (mm)	APPROVED RIMS	MIN. DUAL SPACING IN (mm)	REVS. PER MILE (km)	TIRE WEIGHT LB (kg)	MAX LOAD@INFLATION			
TUBELESS TIRES ON 15 DEGREE DROP CENTER RIMS													SINGLE LB (kg)	SINGLE PSI (kPa)	DUAL LB (kg)	DUAL PSI (kPa)
315/80 R 22.5	L	05321170000	26	68	20,1	43,0	12,5	13,6	9,00	13,8	481	153	10,000	130	9090	130
					(510)	(1093)	(316)	(345)		(351)	(299)	(69)	(4540	900)	(4125	900)

Note - Rim listed first is the measuring rim. Minimum Dual Spacing calculated without chains. * - ECE Certified # - Exceeding the lawful speed limit is neither recommended nor endorsed. Overall widths will change 0.1 inch (2.5 mm) for each 1/4 inch change in rim width. Minimum dual spacing should be adjusted accordingly. 315/80R22.5 tires used on 8.25" rims are restricted to a maximum of 7610 lbs at 120 psi. Continental Tire the Americas, LLC reserves the right to change product specifications at any time without notice or obligations. Please consult rim manufacturers load and inflation limits. Never exceed rim manufacturers limits without permission of component manufacturer. When used on an 8.25" rim, the maximum load and pressure is lower than that indicated on the sidewall.